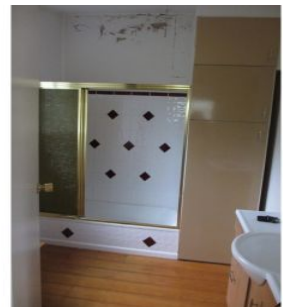




Bartholomew & Co

Auctioneers, Real Estate & Livestock Agents



BOONAH

This solid timber home has grand views over town & captures the prevailing breezes. There are 3 b/rooms upstairs plus kitchen, bath room & generous living areas opening on to a deck. Under is concreted, providing parking, laundry plus the possibility of extra rumpus room area. The 845 m2 block has extensive landscaping & is on 2 separate levels. There are 2 sheds & 2 rain water tanks in the yard plus several fruit trees.

3 1

Type : House
Land Size : 894 sqm
View : <https://www.bartholomew.com.au/5389872>



Tony Moller
54631699