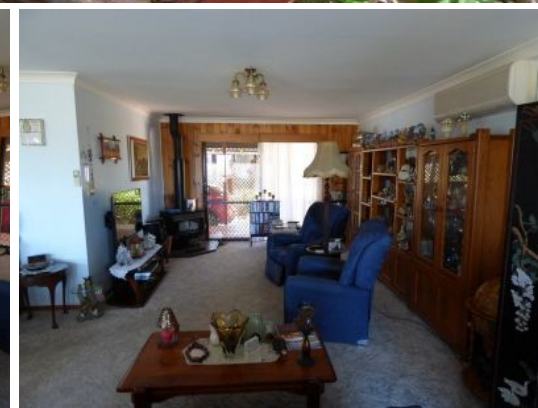




Bartholomew & Co

Auctioneers, Real Estate & Livestock Agents



ROADVALE, QLD

2 1 2 4765 m2

Proceed to Paradise -

This attractive package on 4,765 m2 of elevated land is as good as it gets. The colonial style home has veranda on all sides with timber walls & metal roof. Internally the tiled kitchen has New Guinea Rosewood cupboards & stone bench tops, 2 way bath room with spa bath, 2 large b/rooms, & extra spacious lounge/dining areas plus family room. Many features include new carpet in b/rooms, air con. & fans. A well maintained in ground pool will give you the feel of living in a holiday resort. The lovely gardens with mature trees are watered from both rain water tanks & connection to Roadvale Rural Water Scheme. A separate fenced paddock should handle a pony & there is a large 12 x 6 metre shed with power connected. A very desirable property. \$399,000

Price: \$399,000.00

Property Type: House

Tony Moller

0421215463