

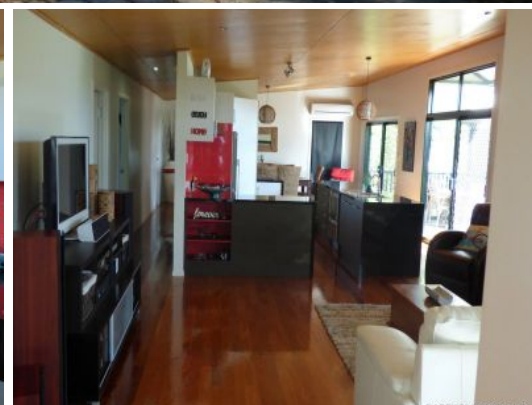


Bartholomew & Co

Auctioneers, Real Estate & Livestock Agents



BARTHOLOMEW & CO



65 George Street KALBAR, QLD

3 2 2 1057 m2

Something special with Eco Design

Located in Kalbar the heart of the 'Scenic Rim', it is a comfortable 15 - 20 minute drive to the Amberley Air base, 10 minutes from Boonah and 25-30 minutes to the city of Ipswich. This is a very modern and stylish home built seven years ago by a local builder with so many extra features to the average home including Eco Design which allows the natural light and warmth of the sun to enter the home throughout the year. There is a 3,500lt rain water tank servicing the laundry and toilets which reduces the water costs. Town water & sewerage is connected. The designer kitchen is placed in the centre of the home consisting of a very modern laminate featuring red splash back tiles with a gas oven and cooktop. It is also fitted with a two drawer Fisher and Paykel dishwasher and for storage has a large corner pantry. Each of the three bedrooms have built-in mirrored robes and fans. The main bedroom is air-conditioned and has its own private ensuite. The main bathroom is predominately white with a splash of feature red tiles. For relaxation there is a deck to enjoy the morning coffee and a larger deck off the living room for entertaining which also overlooks the landscaped gardens. These decks are predominantly Australian Recycled Hardwood for additional character. Great for entertaining with lighting having been placed throughout the w

Price: \$349,000.00

Property Type: House

Tony Moller

0421215463