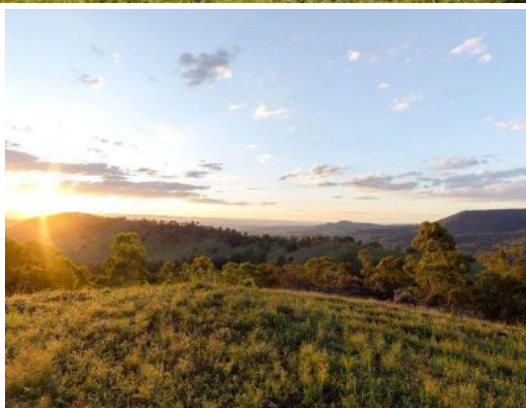




Bartholomew & Co

Auctioneers, Real Estate & Livestock Agents



6/ Spring Creek Road THE FALLS, QLD

 589700 m2

Looking For The Perfect Escape.

Property Features ? Lot 6 - 58.97 Hectares - 145.71 Acres

Price: \$320,000.00

Property Type: Rural

?A unique part of Queensland that has not yet been discovered by the general populace.

?Exceptional 270 degree views from the elevated house site with great views through to Warwick and beyond

?Located between 8-9 Km's from Killarney Township, which has all the everyday basic essentials available.

?Located on a major regional tourist drive that extends from the Scenic Rim.

?Bitumen road frontage to block

?Warwick is 40Ks away (45 minutes) and is a major regional service centre with a diverse range of sporting and recreational facilities

?Granite Belt Wineries are only an hour away (via Legume)

?Close proximity to Queen Mary Falls Kiosk where basic supplies can be obtained

?Beautiful rural landscape and next door to the famed Condamin

Rodney Stenzel

0428779576