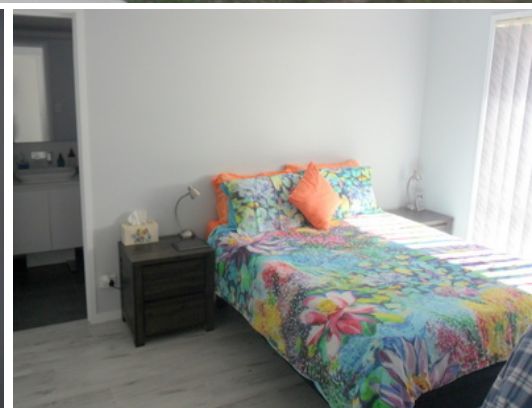




Bartholomew & Co

Auctioneers, Real Estate & Livestock Agents



BEAUDESERT, QLD

 4  2  2  852 m2

As New Home in Sought After Location

This immaculate, modern 4 bedroom home is situated in the tightly held ?Littlewood Park? Estate on 852 m2. It was built in 2017 by Plantation Homes and designed to be disabled friendly. All the hard work has been done with brand new dog-proof fencing and landscaped gardens.

Features:

- Double lock up garage
- 4 Bedrooms, master with ensuite and walk in robe
- All other bedrooms have built in wardrobes
- Spacious open plan kitchen, dining, living
- Alfresco area
- Quality kitchen appliances
- Caesar Stone bench tops
- Large walk in pantry
- Large walk in linen

Price: \$499,000.00

Property Type: House

Garth Weatherall

0438 793 100