



# Bartholomew & Co

Auctioneers, Real Estate & Livestock Agents



500 Mundoolun Connection Rd BOYLAND, QLD

5 3 3 13.72 m2

## "Wirreanda"

- ? 2018 Queensland Master Builders Housing & Construction Award Winner for Individual Home Category
- ? 13.72 hectares\* / 33.9\* acres located only 10 mins\* from Canungra, 40 mins\* Gold Coast and 50 mins\* Brisbane
- ? 5 bedroom, 3 bathroom dual living with magic views and peaceful surrounds
- ? Opportunity for Air BNB or a perfect wedding venue
- ? French doors leading from house and flat onto the expansive verandahs
- ? Electric blinds to main house verandah
- ? 900mm SMEG range gas cook top electric oven in house and flat
- ? Walk-in butlers pantry
- ? Ducted kitchen range hoods
- ? Integrated dishwashers in house and flat
- ? Granite bench tops throughout
- ? 1 x ensuite in the main house, 1 x bathroom, 1 x separate toilet in the laundry off the

**Price:** Offers over \$2,950,000

**Property Type:** Acreage/Semi-Rural

**Garth Weatherall**

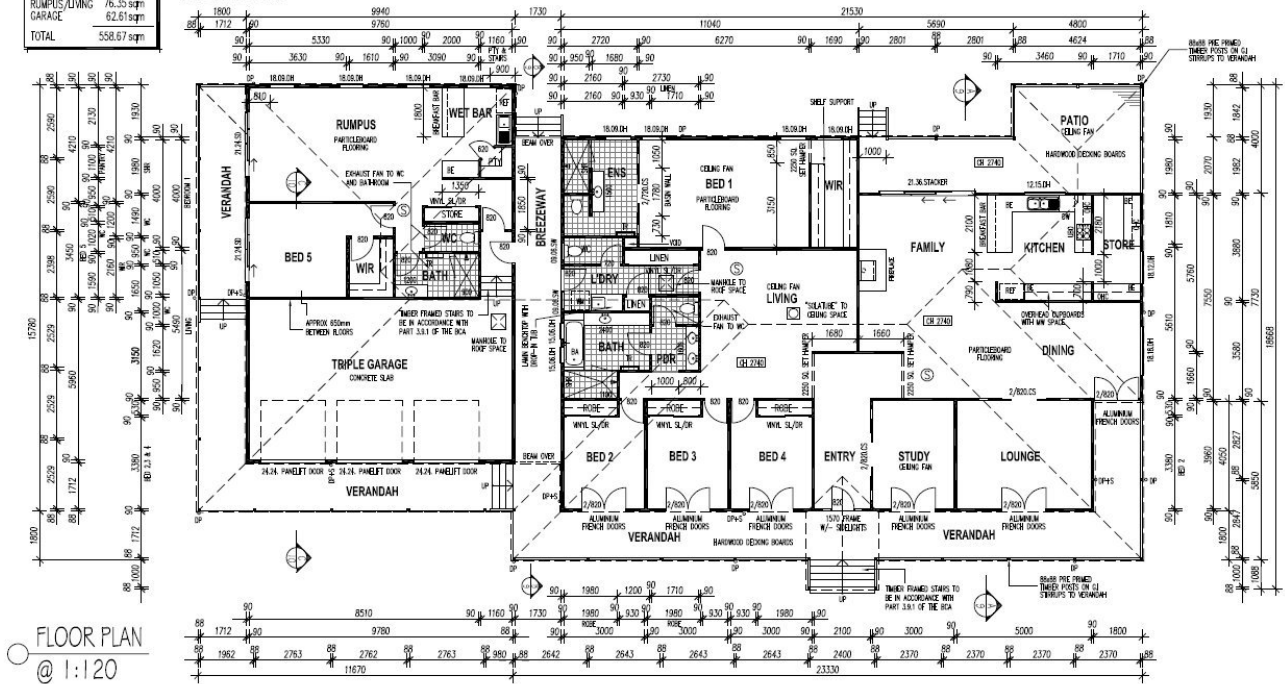
0438 793 100

AREA SUMMARY	
LIVING	259.15 sqm
PATIO	30.98 sqm
VERANDAHS/ BREEZEWAY	119.58 sqm
RUMPUS/LIVING	76.35 sqm
GARAGE	62.61 sqm
TOTAL	558.67 sqm



REFER TO LEGEND ON SHEET 5

## ELEVATIONS



**Bartholomew & Co**  
Auctioneers, Real Estate & Livestock Agents

**500 Mundoolun Connection Rd BOYLAND, QLD**