



500 Mundoolun Connection Rd BOYLAND, QLD

5 3 3 13.72 m2

"Wirreanda"

? 2018 Queensland Master Builders Housing & Construction Award Winner for Individual Home Category

? 13.72 hectares* / 33.9* acres located only 10 mins* from Canungra, 40 mins* Gold Coast and 50 mins* Brisbane

? 5 bedroom, 3 bathroom dual living with magic views and peaceful surrounds

? Opportunity for Air BNB or a perfect wedding venue

? French doors leading from house and flat onto the expansive verandahs

? Electric blinds to main house verandah

? 900mm SMEG range gas cook top electric oven in house and flat

? Walk-in butlers pantry

? Ducted kitchen range hoods

? Integrated dishwashers in house and flat

? Granite bench tops throughout

? 1 x ensuite in the main house, 1 x bathroom, 1 x separate toilet in the laundry off the

Price: Offers over \$2,950,000

Property Type: Acreage/Semi-Rural

Garth Weatherall

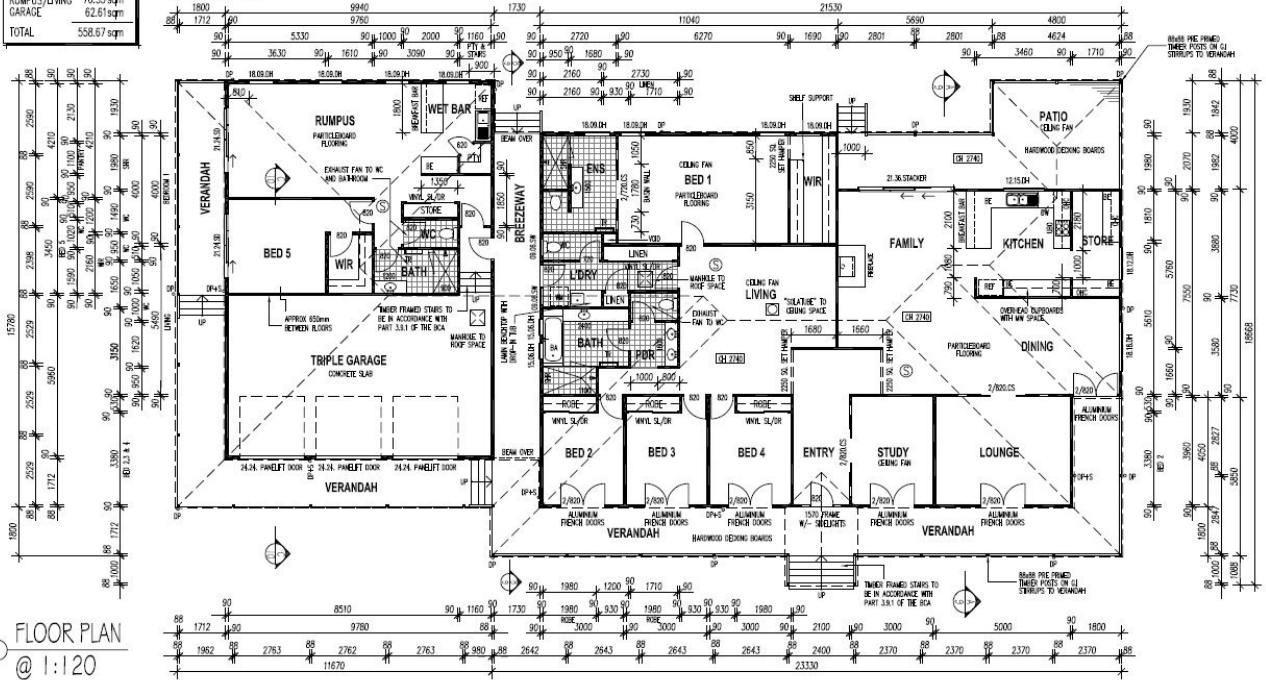
0438 793 100

AREA SUMMARY	
LIVING	299.15 sqm
PATIO	30.98 sqm
VERANDAHS/ BREEZEWAY	119.58 sqm
RUMPUS/LIVING GARAGE	76.35 sqm
	62.61 sqm
TOTAL	558.57 sqm



REFER TO LEGEND ON SHEET 5

ELEVATIONS



FLOOR PLAN
@ 1:120

THESE PLANS ARE COPYRIGHT TO HERITAGE HOMESTEADS AND MAY NOT BE PRODUCED WITHOUT PERMISSION