



8 Stacey Drive BOONAH, QLD

🚗 5 🏠 1.5 🚗 3 📏 8161 m2

EVERYTHING YOU EVER WANTED!

On offer is a mammoth 5 bedroom home on a gigantic 8161m2 block. This north side Boonah location is highly desired with access to town water, space for your dog, workshop, van, extended family and more. This colonial style brick home has a nice wide frontage, just like the grand home we all dreamed of having. A beautiful big lounge is found upon entrance with fireplace, separate dining room, study and a large timber kitchen including two WIP. Leaving the kitchen, you walk out onto the back veranda, a great spot for a cup of tea! Downstairs is a 10m by 6m garage, rumpus room and storage.

Additional Features:

- 18m x 6m workshop with concrete floor and power
- 9m x 7m lined shed with concrete floor and power
- 2 x garden sheds with concrete floor and power
- 4 x 5000G poly rain water tanks + town water available

Price: \$850,000.00

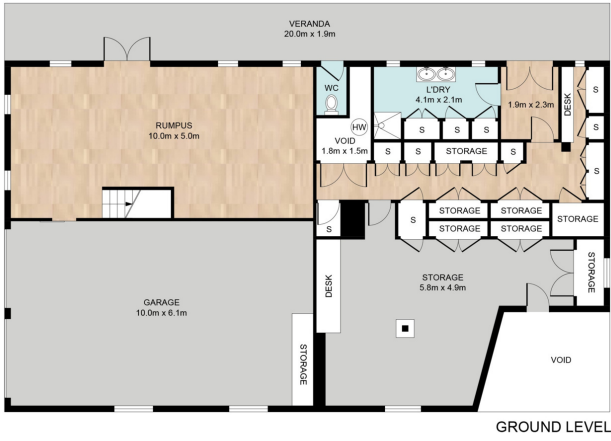
Property Type: House

Joey Worley

0466838667

8 Stacey Dr, Boonah

5 | 2 | 6 | 547m²



GROUND LEVEL



FIRST LEVEL

Whilst every attempt has been made to ensure the accuracy of the floor plan contained here, measurements of the doors, windows, rooms and any other items are approximate and no responsibility is taken for error, omission or mis-statement. This plan is for illustrative purposes only and should only be used as such by any prospective purchaser. The services systems and appliances shown have not been tested and no guarantee as to their operability or efficiency can be given.