



Bartholomew & Co

Auctioneers, Real Estate & Livestock Agents



8 Golf Avenue BOONAH, QLD

2 1 2 1012 m2

?Lacewood? - A great example of a traditional workers cottage.

Oozing the character and charm you would expect from a home of the era, ?Lacewood? is sure to attract a swag of buyers. The current owners have carried out a quality renovation and the home now features polished pine floors, high ceilings, vj walls, fretwork, French doors, 2 built in bedrooms, A/c to main bedroom and living, new fans thru out, new stainless kitchen and new bathroom. A full length Easterly facing verandah accentuates the traditional facade and provides the perfect outdoor living area. A small rear deck also provides another place to enjoy a quiet coffee break! The near level 1012m block has plenty of room for a shed or just space for kids to play. There is lockable parking for 1, single carport and possible parking and loads of storage under. A character home in a walk to everything location this one is hard to beat!

Price: Offers over \$559,000

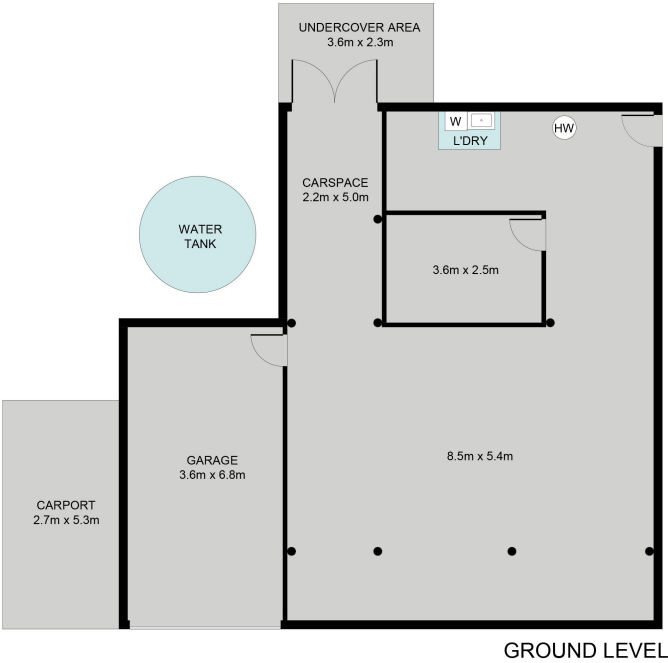
Property Type: House

Joey Worley

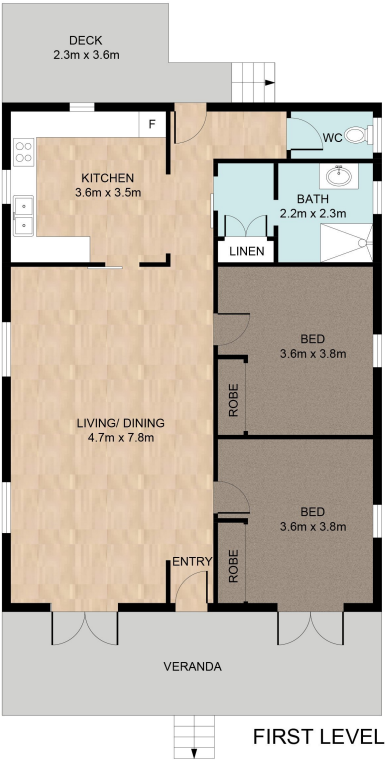
0466838667

8 Golf Ave, Boonah

2  | 1  | 3  | 263m² 



GROUND LEVEL



FIRST LEVEL

Whilst every attempt has been made to ensure the accuracy of the floor plan contained here, measurements of the doors, windows, rooms and any other items are approximate and no responsibility is taken for error, omission or mis-statement. This plan is for illustrative purposes only and should only be used as such by any prospective purchaser. The services systems and appliances shown have not been tested and no guarantee as to their operability or efficiency can be given.