



# Bartholomew & Co

Auctioneers, Real Estate & Livestock Agents



## 320 Gray Street Roadvale QLD

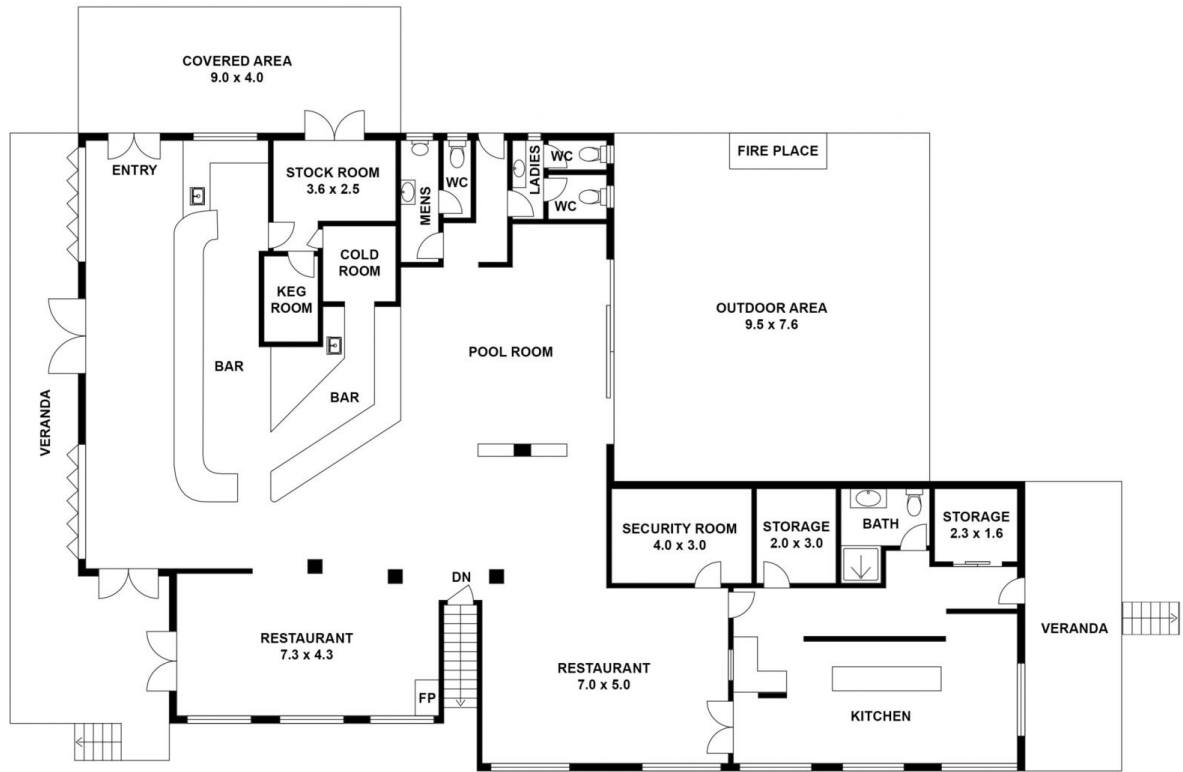
Nestled in the heart of the Scenic Rim, Roadvale is a thriving destination just under an hour from Brisbane. This charming country setting has become a hotspot for city dwellers and tourists eager to explore South East Queensland's natural beauty.

Previously operating as a gastropub, the Roadvale Hotel showcased local producers and fresh regional cuisine. With the Scenic Rim experiencing remarkable growth, the venue now presents a rare turnkey investment opportunity. Extensive renovations have been completed, providing a solid foundation for new owners to build upon its established success. The sale includes all media platforms, branding, and logos, ensuring a seamless transition.

<b>Type</b>	: Leisure
<b>Price</b>	: FOR SALE
<b>Building Size</b>	: 575 sqm
<b>Land Size</b>	: 3496 sqm
<b>View</b>	: <a href="https://www.bartholomew.com.au/8225267">https://www.bartholomew.com.au/8225267</a>

[For full version visit the website](https://www.bartholomew.com.au)

<https://www.bartholomew.com.au>



Floor Plan

320 Grey St, Roadvale.

Not to scale - All measurements are approximate - Drawn for presentation purpose only -  
Plants are drawn for decorative purposes only